

AMBAG

Board of Directors Meeting

October 11, 2023



Item #1: Call To Order



Item #2: Pledge of Allegiance



Item #3: AB 2449 Vote On “Just” and “Emergency” Cause

Recommended Action: Approve



Item #4: Roll Call



Item #5: Oral Communications from the Public on Items Not on the Agenda

**(A maximum of three minutes on any
subject not on the agenda)**



Item #6: Oral Communications from the Board on Items Not on the Agenda



Item #7A: Executive/Finance Committee

Recommended Action: Information



Item #7B: Monterey Bay National Marine Sanctuary (MBNMS) Advisory Council (SAC) Meeting

Recommended Action: Direct



Item #8: Executive Director's Report

Recommended Action: Information



Item #9: Consent Agenda (Items #9A – 9E)

Recommended Action: Approve



Item #10: Items Removed from Consent Calendar for Discussion and Possible Action



Item #11A: Draft 2026 Regional Growth Forecast

Recommended Action: Information



Draft 2026 Regional Growth Forecast

Heather Adamson, AMBAG
Beth Jarosz, Population Reference Bureau

October 11, 2023



Overview

- Background and purpose of forecast
- Forecast inputs and assumptions
- Preliminary results
- Next Steps



What is the Forecast?

- Forecast for tri-county area:
 - Population
 - Housing
 - Employment
- Base Year – 2020
- Horizon Year – 2050
- Basis for planning for growth in the MTP/SCS, transportation project level analysis, corridor studies, economic analysis, etc.
- Input for the Regional Travel Demand Model which forecasts travel patterns

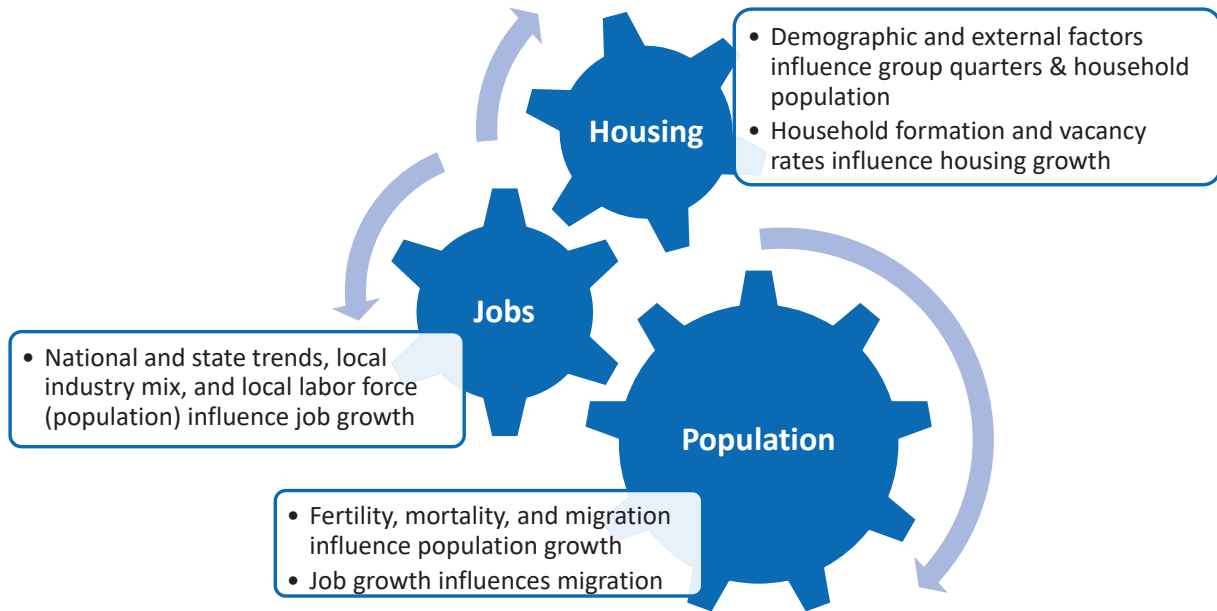


How the forecast relates to other planning efforts

- Forecast is an expectation of growth not the same as...
 - General plan: General plan is buildout; forecast is anticipated growth by 2050
 - Regional Housing Needs Allocation (RHNA): RHNA is an assessment of and plan for addressing 8-year housing need, forecast is anticipated growth by 2050
 - Region plan shall accommodate 6th Cycle RHNA by 2050
 - Local housing elements will be considered during subregional allocation



Forecast Methodology



Forecast Assumptions Workgroup

- Reviewed/discussed:
 - Birth and death rates
 - Migration, especially in relation to housing
 - Overcrowding / household size
 - Industries that might grow/shrink

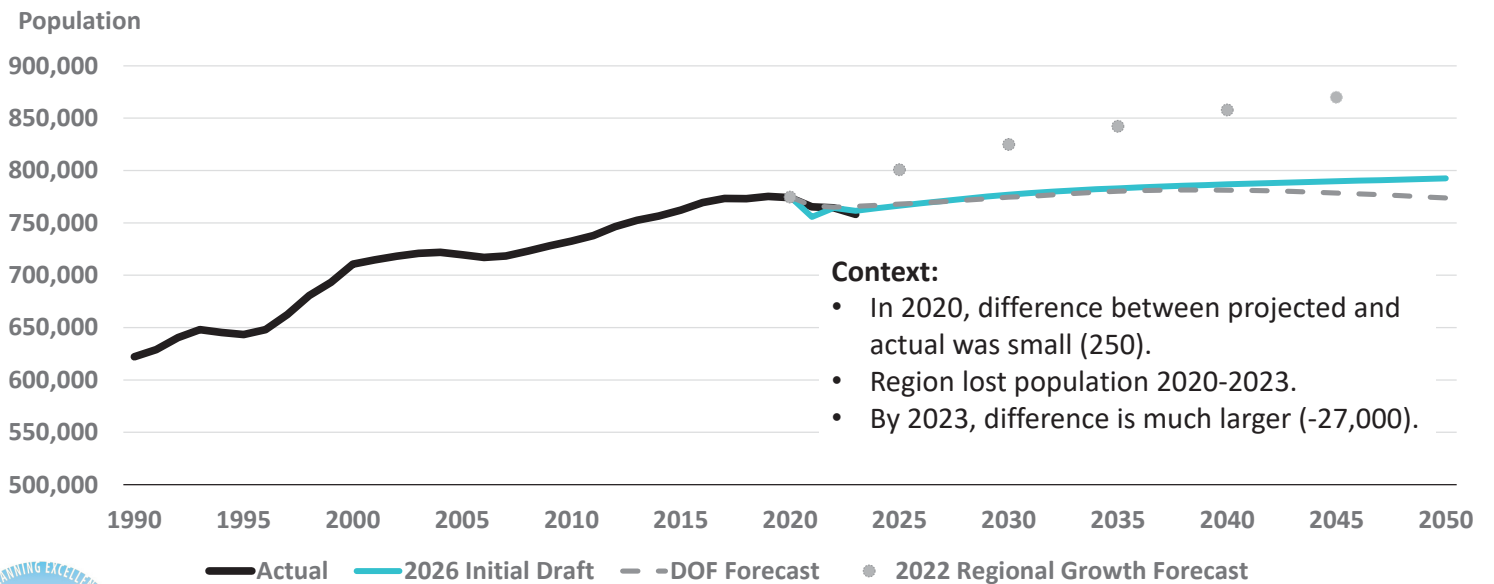


First Draft Forecast Assumptions: Population

- Birth rates continue to fall for younger ages
- Death rates stable
- Domestic out-migration eases as housing supply grows



First Draft: AMBAG Region Population



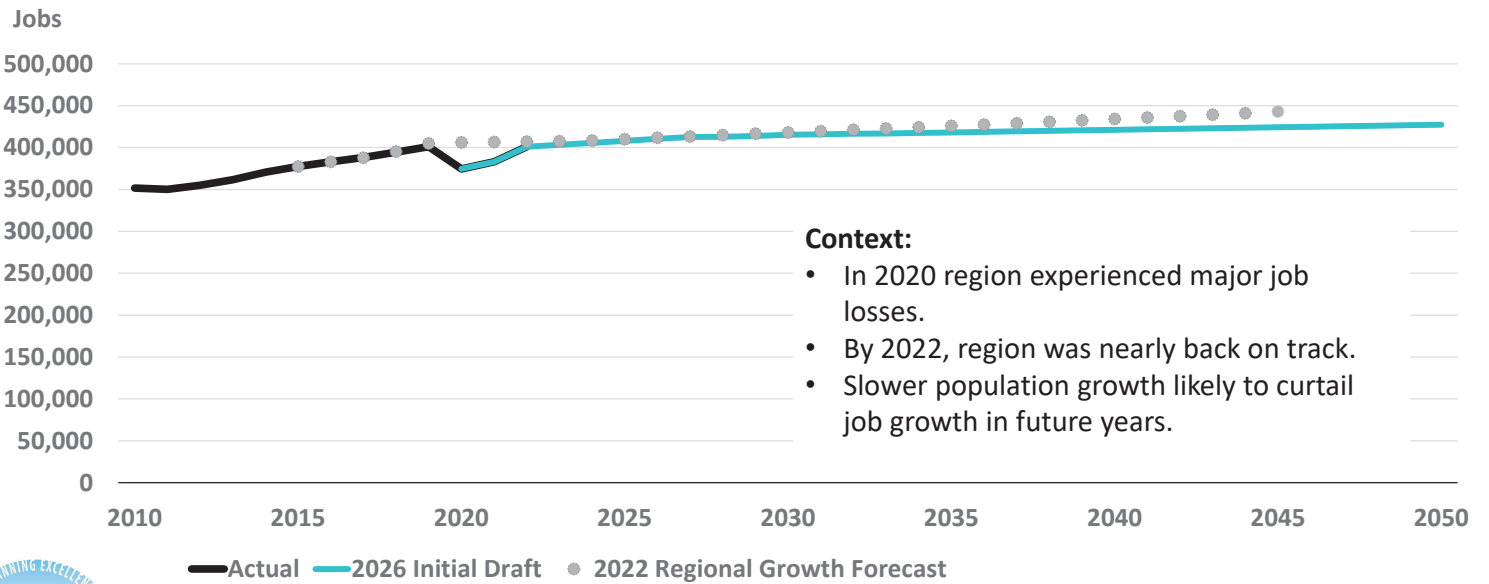
Sources: U.S. Census Bureau; California Department of Finance; PRB and AMBAG

First Draft Forecast Assumptions: Jobs

- Some industries will continue to grow:
 - Agriculture-related jobs, healthcare, and social assistance
- Some industries might shrink:
 - Retail, information



First Draft: AMBAG Region Jobs



Context:

- In 2020 region experienced major job losses.
- By 2022, region was nearly back on track.
- Slower population growth likely to curtail job growth in future years.



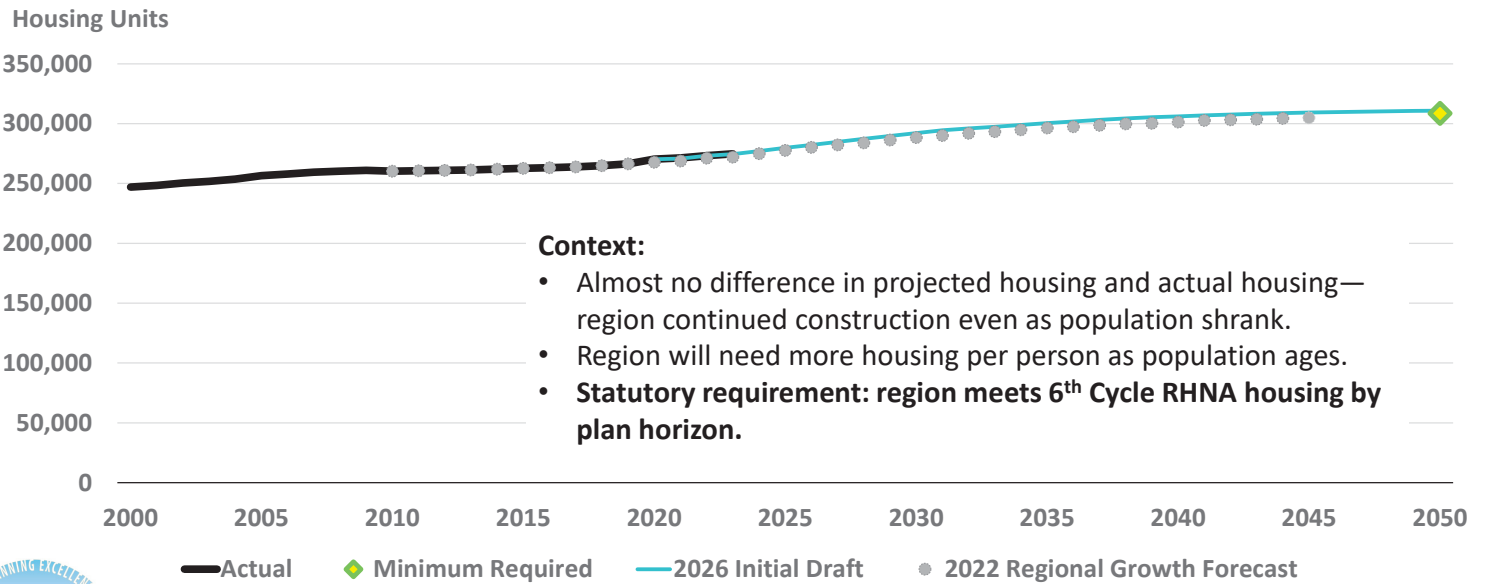
Sources: California Employment Development Department; InfoUSA/Data Axle; PRB and AMBAG

First Draft Forecast Assumptions: Housing

- Aging population leads to smaller household sizes
- Construction and policies begin to ease overcrowding
- Vacancy rates slowly return to normal



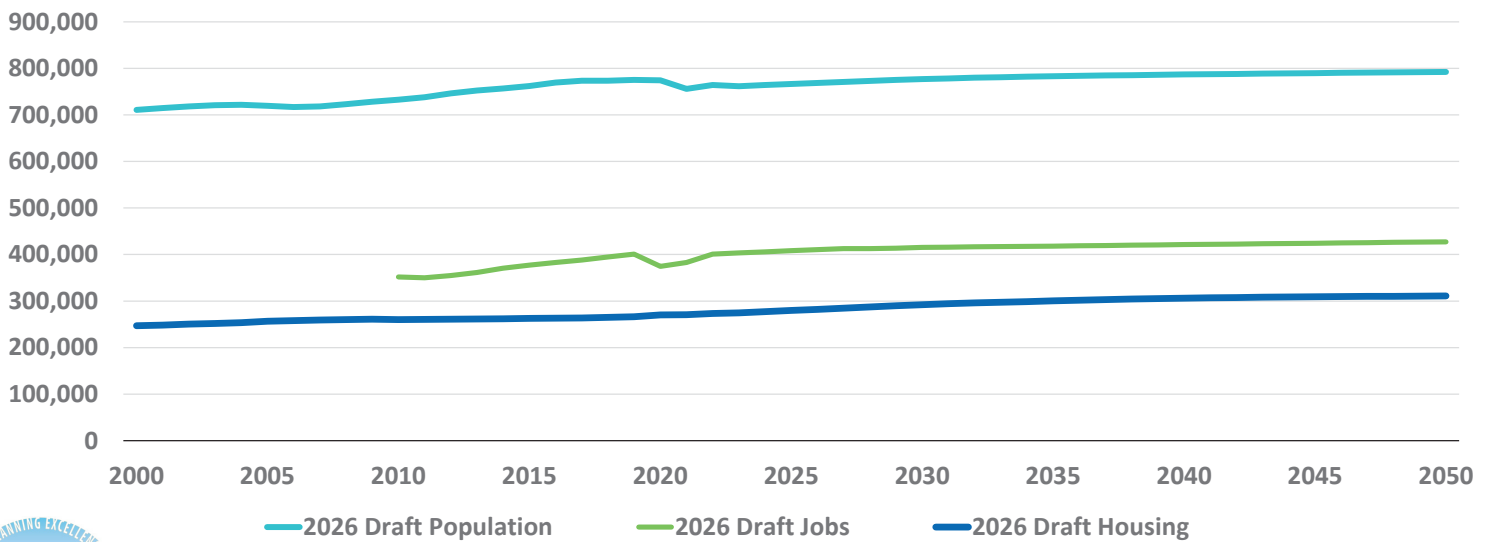
First Draft: AMBAG Region Housing



Sources: U.S. Census Bureau; California Department of Finance; PRB and AMBAG

First Draft: AMBAG Region Population, Jobs, and Housing

Population



Sources: U.S. Census Bureau; California Department of Finance; California Employment Development Department; InfoUSA/Data Axle; PRB and AMBAG

Timeline

- Fall 2023 – Complete draft regional growth forecast
- Early 2024 – Begin subregional allocation



Input/Questions

- Board members are asked to discuss the draft forecast results and provide feedback.



Item #11B: 2050 Metropolitan Transportation Plan/Sustainable Communities Strategy Update

Recommended Action: Information





2050 MTP/SCS Update

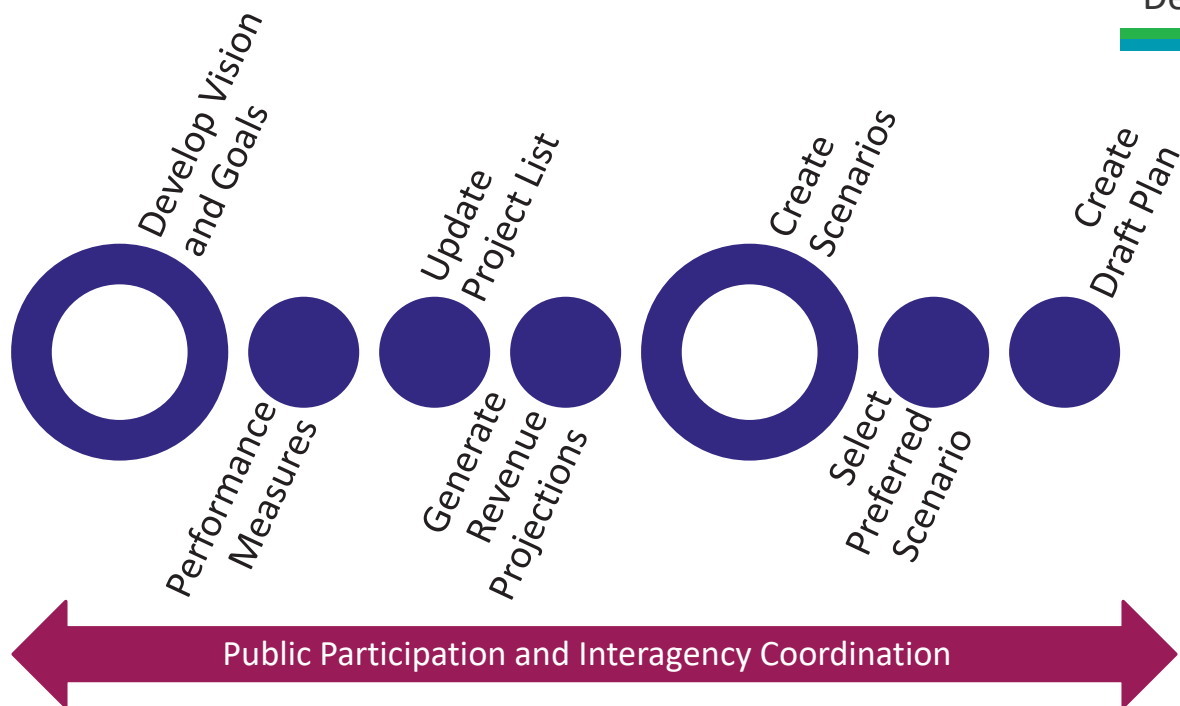
Heather Adamson, AICP
October 11, 2023

ASSOCIATION OF MONTEREY BAY
AREA GOVERNMENTS



Background

- Long range plan for transportation investments
- Federal and state law requires that an MTP/SCS be prepared every four years
- Must provide a 20+ year horizon planning period
- Detailed work program and schedule approved in April 2023
- 2050 MTP/SCS scheduled for adoption in June 2026
- Highlight a number of key components under development





2026 Regional Growth Forecast

- Developing the tri-county forecast for population, housing, and employment using the Cohort Component Population Method
- This method implements a cohort component model for the population forecast that uses birth, death, and migration information to predict future population
- AMBAG Board will be asked to accept the tri-county regional numbers later this fall/early 2024
- Begin subregional disaggregation to the jurisdiction level in 2024
- Growth forecast is scheduled to be approved for planning purposes in fall 2024



Vision & Policy Goals

Vision: An accessible and connected region for a safe, resilient, and equitable future

MOBILITY	ENVIRONMENT	COMMUNITIES	ECONOMIC	EQUITABLE
Build and maintain a safe and robust transportation network	Create a healthy region for all	Develop, engage, connect, and sustain communities that are livable and thriving	Support a sustainable, efficient, and productive regional economic environment that provides opportunities for all	Plan for people of all ages, abilities, and backgrounds



MTP/SCS Project List

- Developing a new transportation project database
- In 2024, AMBAG will begin work with the RTPAs, transit operators, Caltrans, and local jurisdictions to update the project list for the 2050 MTP/SCS
- “Call for Projects” will allow for changes to existing 2045 MTP/SCS projects, adding new projects or delete those that have been completed
- Projects will be evaluated using MTP/SCS performance measures for inclusion in the Plan



Next Steps

- Continue to develop the 2026 Regional Growth Forecast
- Finalize the Vision and Policy Goals
- Update MTP/SCS performance measures
- Continue to implement the 2050 MTP/SCS work plan components, including updating the project list, revenue forecasts, and scenario development



Input/Questions

Item #12: Closed Session



Item #13: Reconvene from Closed Session

Recommended Action: Report



Item #14: Adjournment

Next meeting: November 8, 2023

