

AMBAG

Board of Directors Meeting

October 14, 2020



Item #1: Call to Order



Item #2: Roll Call



Item #3: Oral Communications from the Public on Items Not on the Agenda



Item #4: Oral Communications from the Board on Items Not on the Agenda



Item #5: Appointment of Nomination Committee

Recommended Action: Appoint



Item #6A: Executive/Finance Committee

Recommended Action: Information



Item #6B: Monterey Bay National Marine Sanctuary (MBNMS) Advisory Council (SAC) Meeting

Recommended Action: Direct



Item #7: Executive Director's Report

Recommended Action: Information



Item #8: Consent Agenda (Items #8A-8G)

Recommended Action: Approve



Item #9: Items Removed from Consent Calendar for Discussion and Possible Action



Item #10A: Final 2022 Regional Growth Forecast

Recommended Action: Information



2022 Final Draft Regional Growth Forecast

October 14, 2020

Heather Adamson, AICP

Director of Planning



Summary

- Background and purpose of forecast
- Final Draft 2022 Regional Growth Forecast
- Subregional Allocation and Review
- Next Steps

What is the Forecast?

- Forecast for tri-county area:
 - Population
 - Housing
 - Employment
- Base Year – 2015
 - Some data through 2019/2020
- Horizon Year – 2045
- Basis for planning for growth in the MTP/SCS, transportation project level analysis, corridor studies, economic analysis, etc.
- Input for the Regional Travel Demand Model which forecasts travel patterns

Growth Forecast vs. RHNA Allocation

- Forecast alone does not guide Regional Housing Needs Allocation (RHNA)
- RHNA methodology for disaggregation also considers:
 - Fair share (avoiding disproportionate income categories)
 - Lack of service capacity such as water (by statute)
 - Market demands for housing
 - Needs of farm workers
 - Needs generated by a university or college
- RHNA discussions will begin in 2021 following the development of the growth forecast

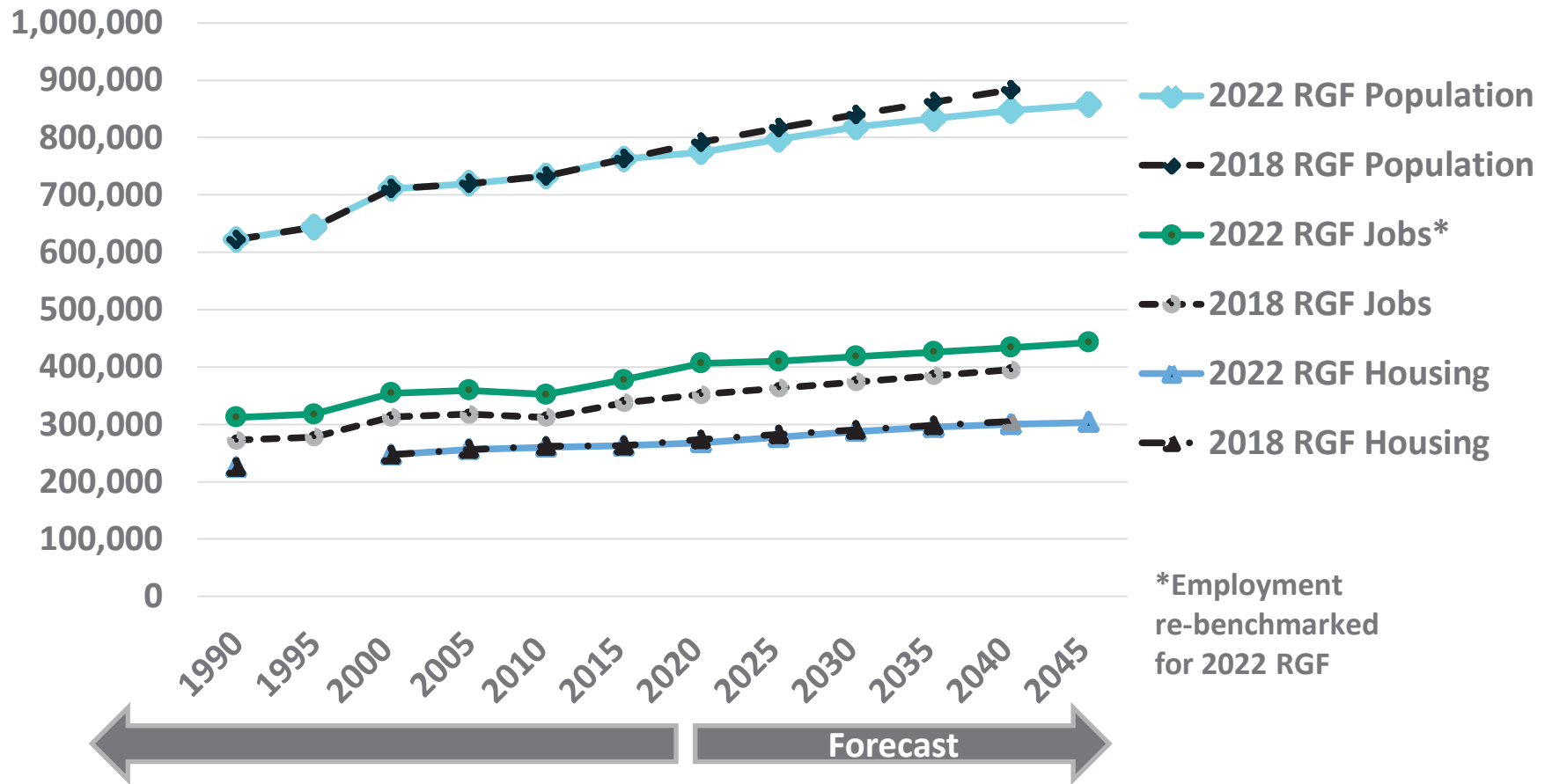
Growth Forecast vs. General Plans

- Purpose of regional growth forecast is to show what is likely to occur
- General Plans often look at full potential build out in order to address potential environmental impacts
- Regional forecast is being developed on a different timeline than General Plans
- Due to different goals and different timelines the numbers will not match exactly with any given General Plan



2022 Regional Growth Forecast Shows Slowing Growth

Number in AMBAG Region

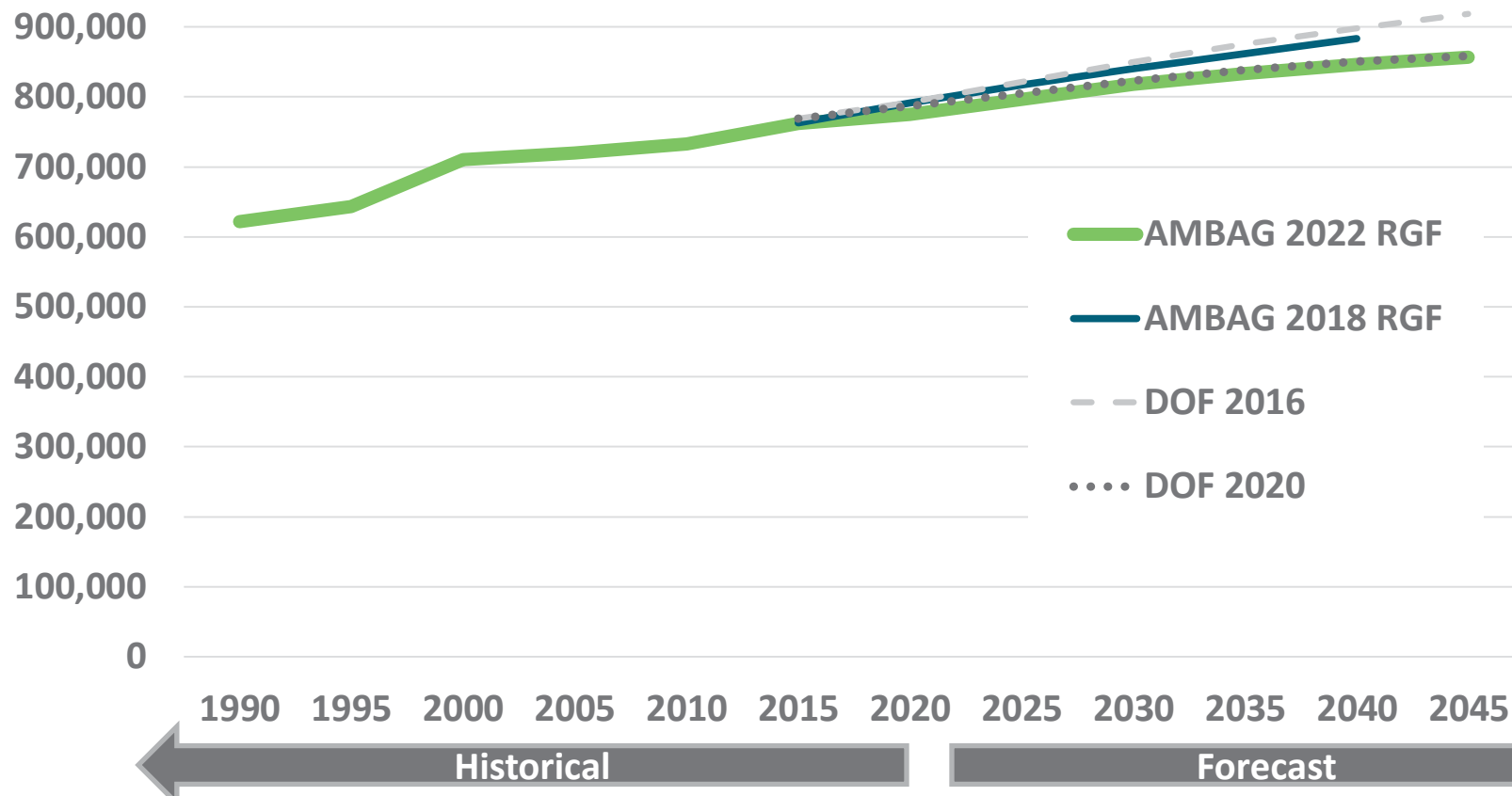


*Employment re-benchmarked for 2022 RGF

Sources: California Department of Finance; AMBAG and PRB

Population Growth Slowing, Reflected in Lower DOF 2020 Forecast

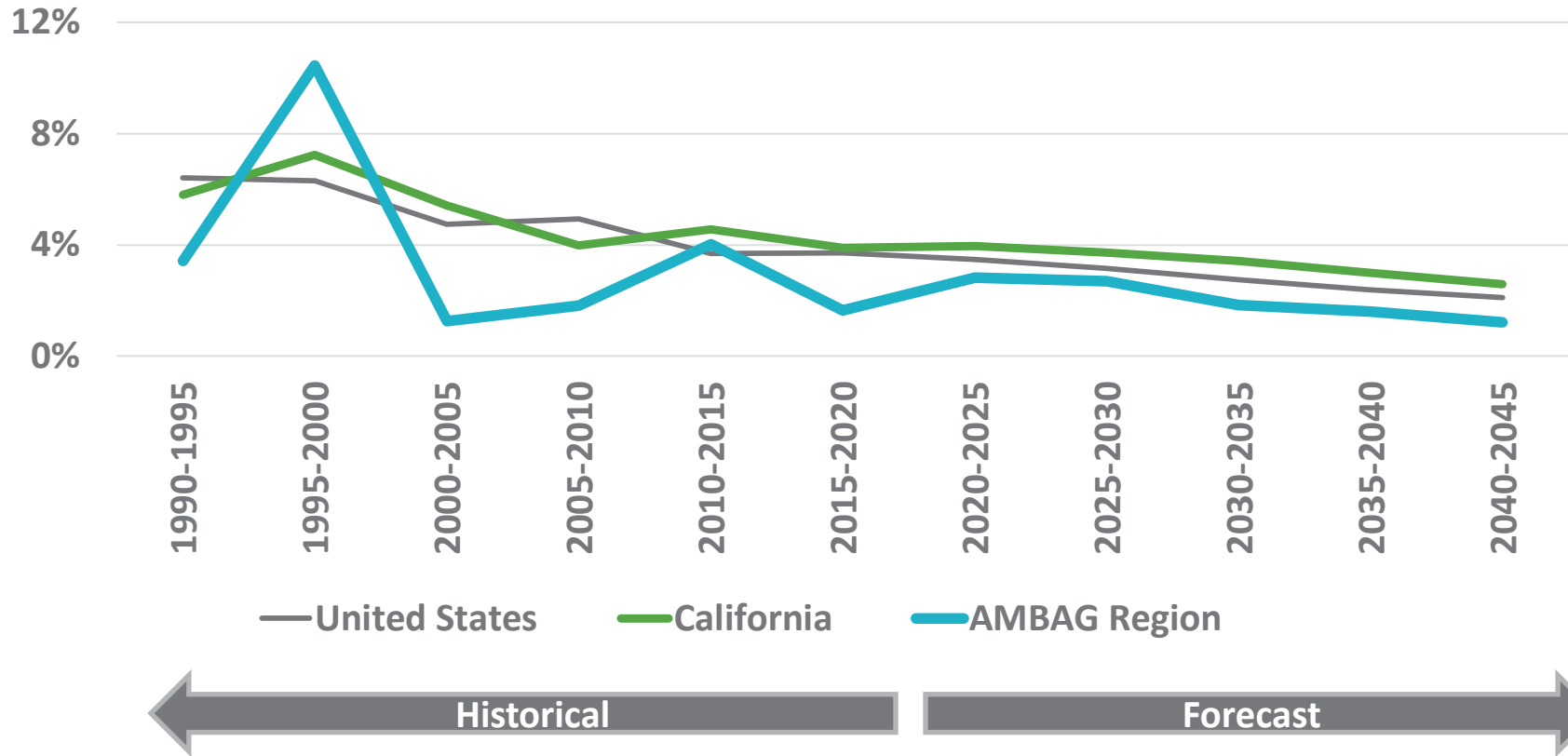
Total Population



Notes: DOF Current is 2016 base year projection, updated in 2019. DOF 2020 DRAFT was circulated for local review in fall 2019.
Sources: California Department of Finance; AMBAG and PRB

Region's Slowing Growth Rate Reflects Broader Demographic Trends

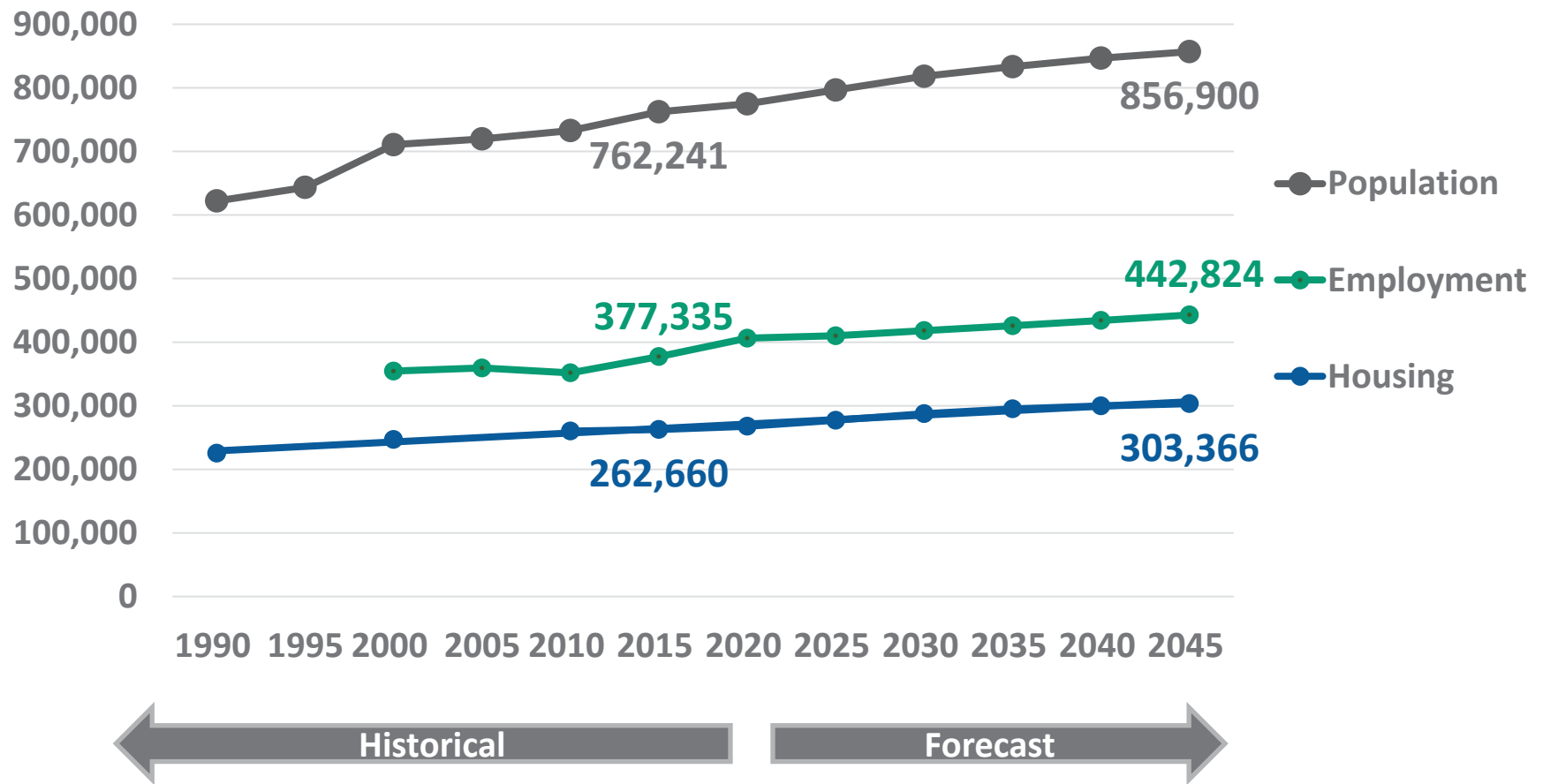
Percent Change in Population
(From Prior Period)



Sources: California Department of Finance; AMBAG and PRB

Summary: Final 2022 RGF Population, Employment, Housing

Number in AMBAG Region



Sources: California Department of Finance; AMBAG and PRB

Summary: Comparison of 2022 RGF and 2018 RGF

	2022 RGF Population	2018 RGF Population	2022 RGF Jobs*	2018 RGF Jobs	2022 RGF Housing	2018 RGF Housing
2015	762,241	762,676	377,335	337,600	262,660	262,660
2040	846,600	883,300	434,147	395,000	299,773	305,293
2045	856,900		442,824		303,366	

Notes: 2022 Jobs reflect re-benchmarking.

Sources: California Department of Finance; California Employment Development Department; AMBAG and PRB

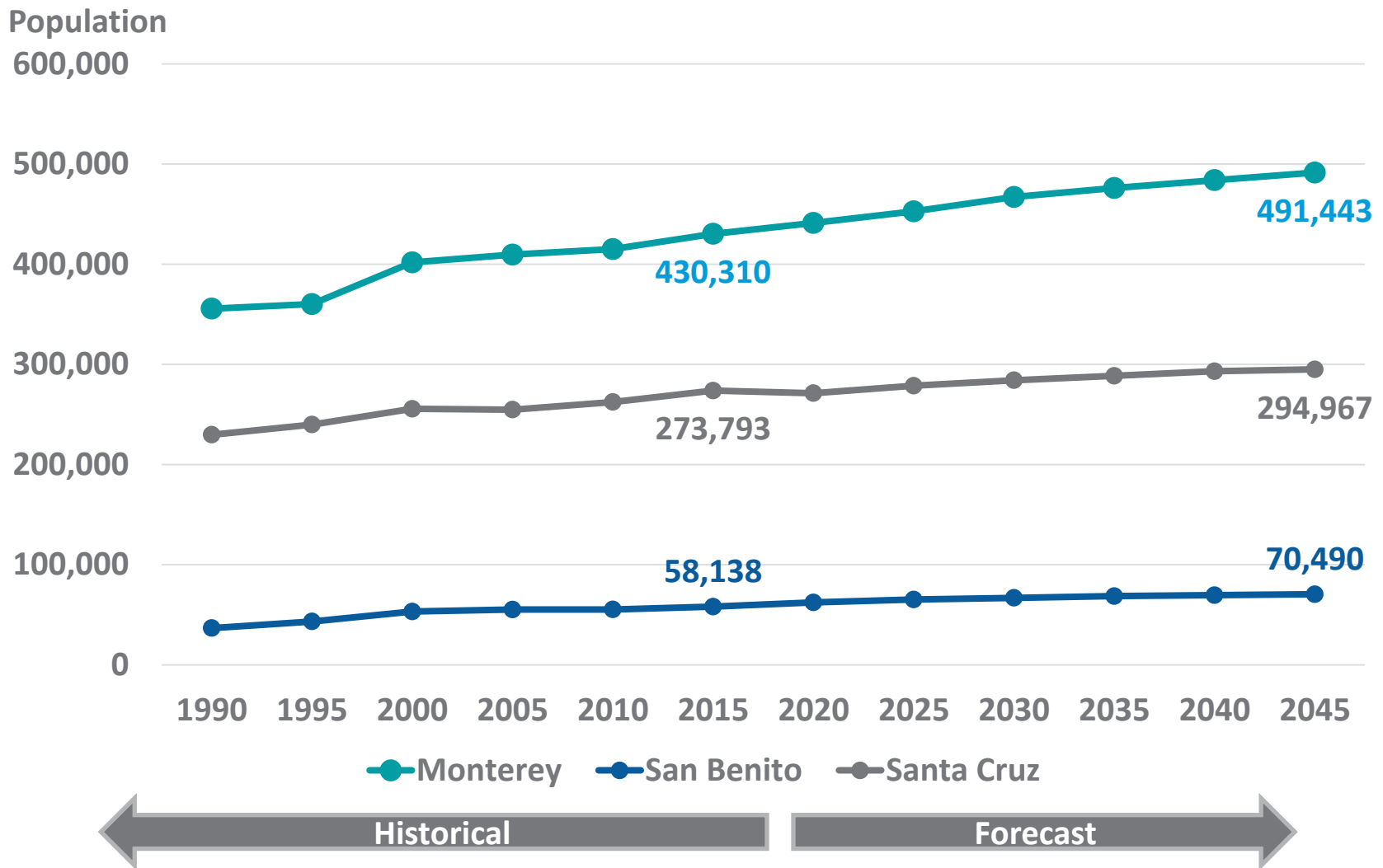


Subregional Allocation Review

- Subregional forecast numbers were reviewed with all jurisdictions
- Feedback was incorporated into the final draft subregional forecast included in Attachment 2
- Conducted more than 80 one-on-one meetings to date with local jurisdictions/agencies plus discussions at Planning Directors Forums (Attachment 3)

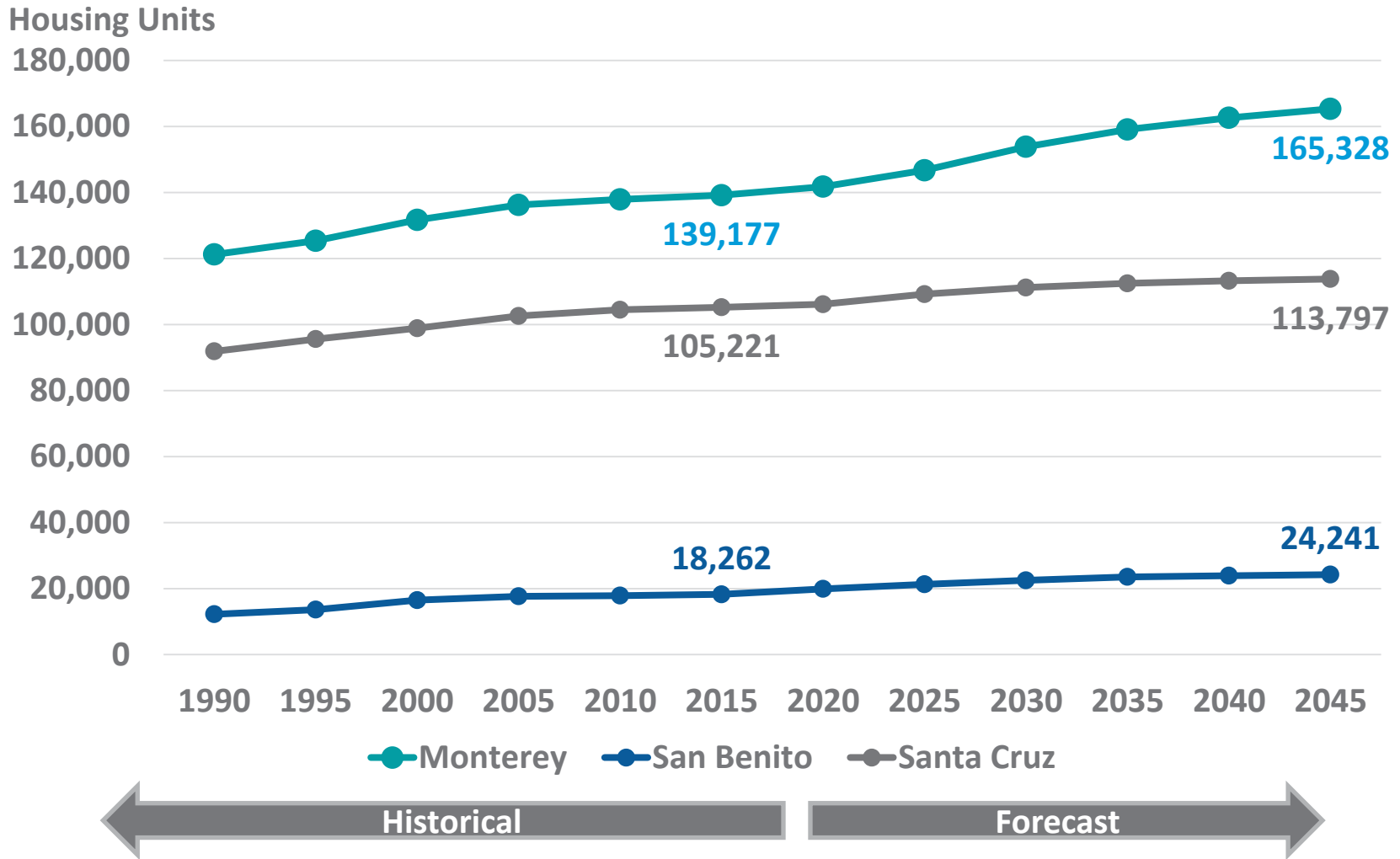


2022 Subregional: Population by County



Sources: California Department of Finance; AMBAG and PRB

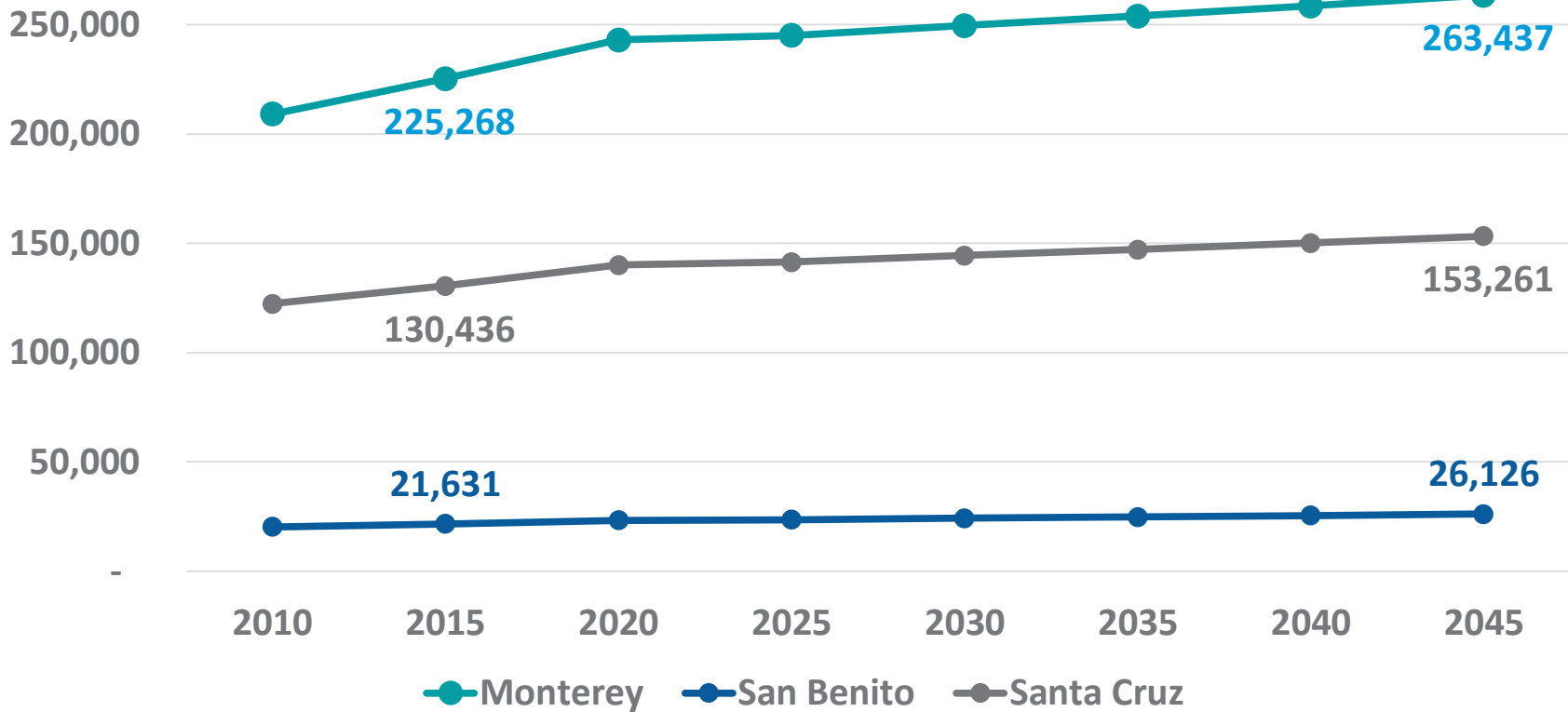
2022 Subregional: Housing by County



Sources: California Department of Finance; AMBAG and PRB

2022 Subregional: Jobs by County

Jobs (place of work)
300,000



Sources: California Employment Development Dept.; InfoUSA; AMBAG and PRB

Forecast Work To Date

- Prelim Draft Regional Growth Forecast (March 2020)
- Prelim Draft Subregional Growth Forecast input and review with local jurisdictions (May 2020 – July 2020)
- Revised Draft Forecasts released to reflect updated 2020 estimates from DOF and input from local jurisdictions (July 2020)
- Additional feedback received from local jurisdictions on Revised Draft Forecasts (August – September 2020)
- Final Draft Forecasts (October 2020)



Next Steps

- AMBAG Board is scheduled to accept the 2022 RGF and subregional allocation in November
- Later this year, AMBAG modeling staff will work with local jurisdictions to use RGF data to update the traffic analysis zones (TAZs) for the regional travel demand model – requires local jurisdiction input



Questions



Item #11: Adjournment

